

CEOP 5th International Implementation Meeting

LBA Reference Sites Status Report

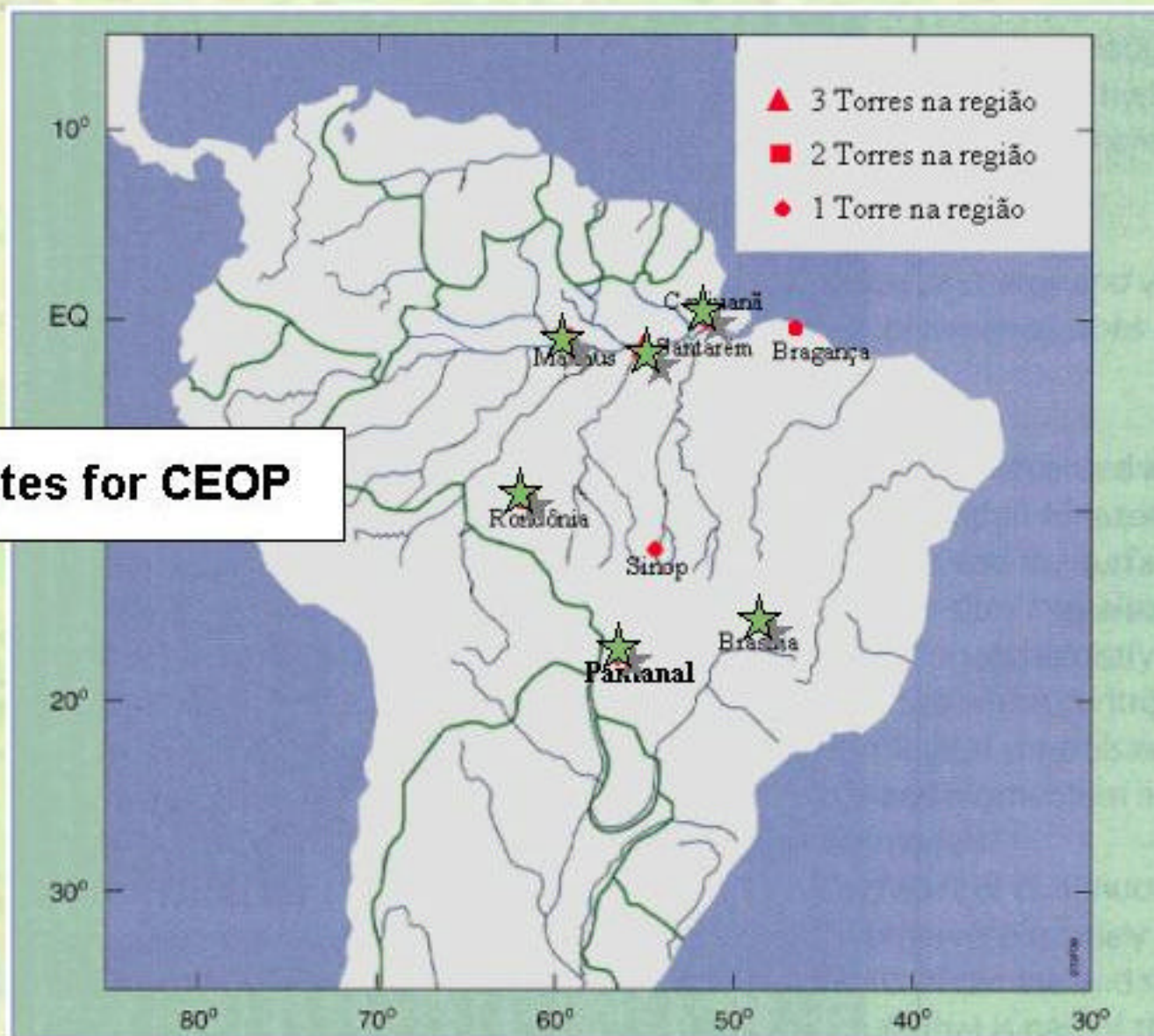
Paris - France

February 26 – March 04, 2003

Luiz M. Horta

LBA Reference sites for CEOP

Sites for CEOP



Current LBA-DIS Node Configuration



Caxiuana Forest

Data available



Caxiuana Site zoom in



Caxiuana Data Status

- On February 9 received data in non-CEOP format. Files (Excel spreadsheets) have been sent to Steve for evaluation.
- We are in the process of formatting the data with help from somebody who has done this work before (Brasilia site person).

SANTAREM Flona Km 83 tower (km 67 similar)

Soil & radiation data available
Flux data pending



PROFILES

Wind (6 hrs)

Temperature (6 hrs)

CO₂/H₂O (12 hrs)

N₂O and CH₄

ECOSSYSTEM FLUXES

Momentum/Heat

CO₂/H₂O (2 systems)

SOIL/ATMOSPHERE TRACE GAS FLUXES

N₂O, NO, and CH₄

Cup, 2D Sonic Anemometers

Campbell 107

LI-7000 (Closed Path)

Campbell CSAT3

LI-7500 (Open Path),

LI-7000 (Closed Path)

automated and manual
enclosures



Automatic chamber for soil
respiration measurements

Santarem tower (problem that has been corrected): tree branch fell in one of the steel cables that holds the tower.



Santarem tower (repairs already made)



Santarem tower fall (repairs already made)



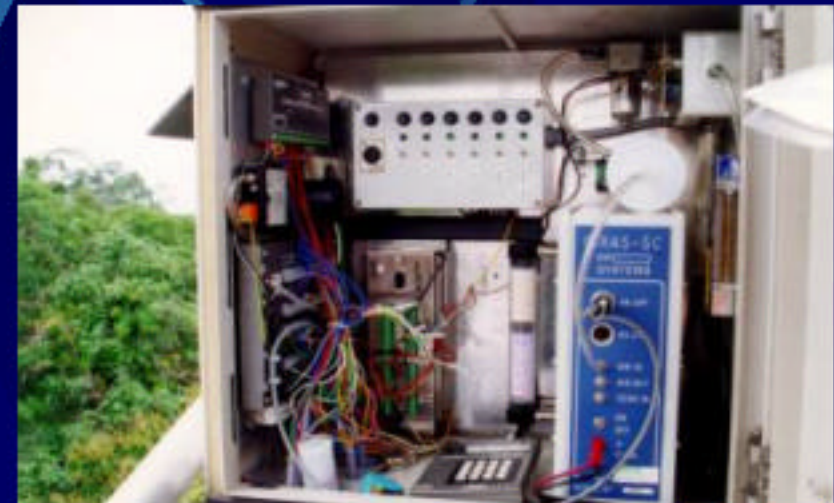
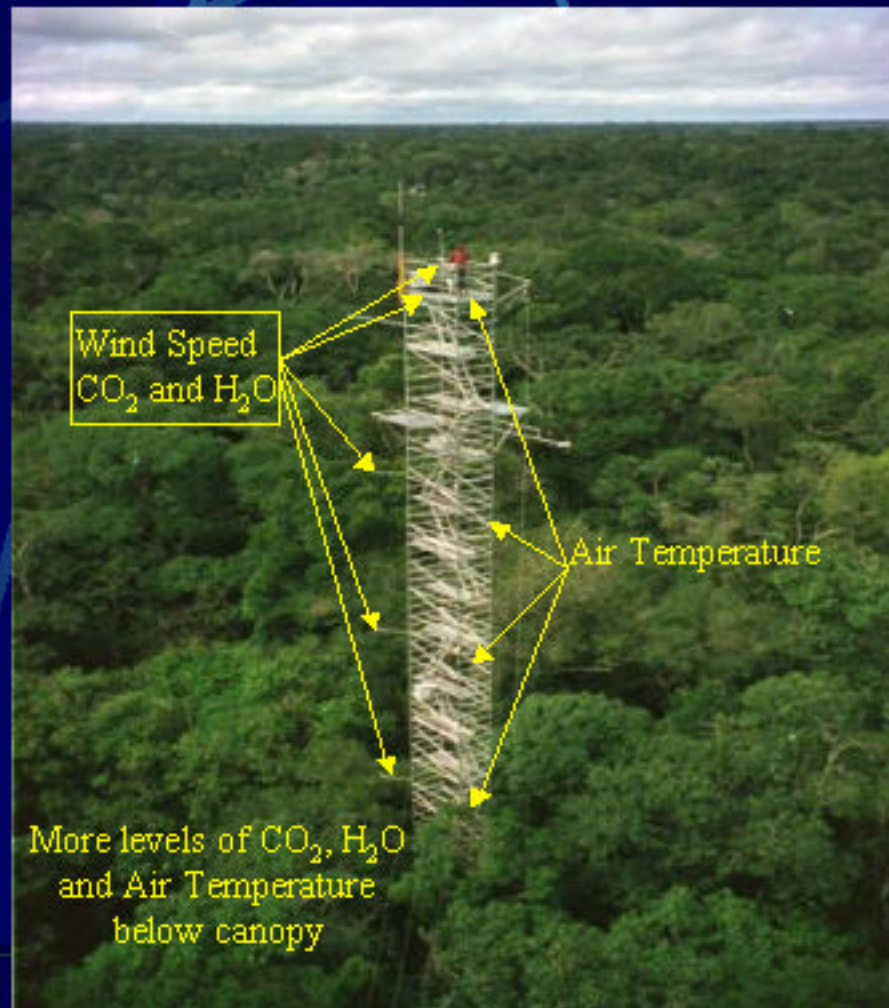
Santarem Data Status

- Data collection in progress.

Data available

Manaus K34 site

Profile Instrumentation



*Profile of CO₂ and H₂O
concentrations*

Manaus site support vehicle



Manaus Data Status

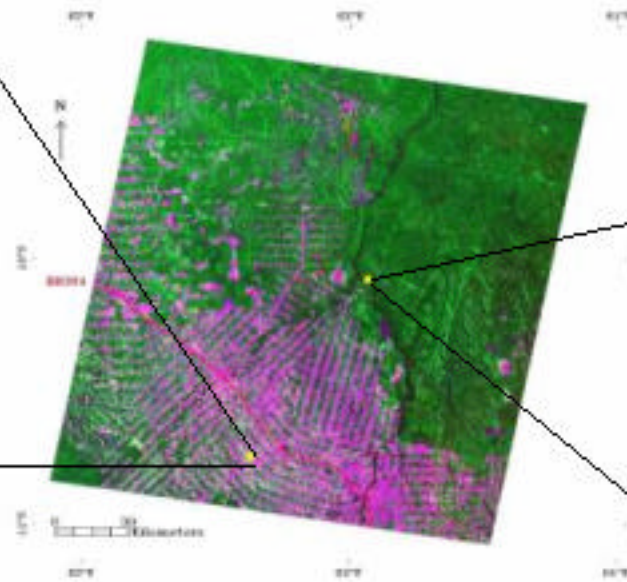
- Data collection in progress.

Rondonia sites

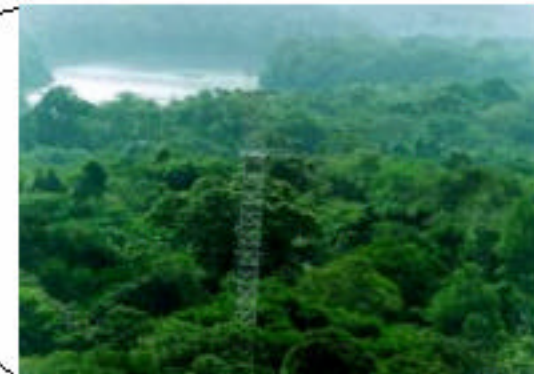
Rebio Jaru tower deactivated
Data available for FNS (pasture)



Fazenda Nossa Senhora
(pasture)

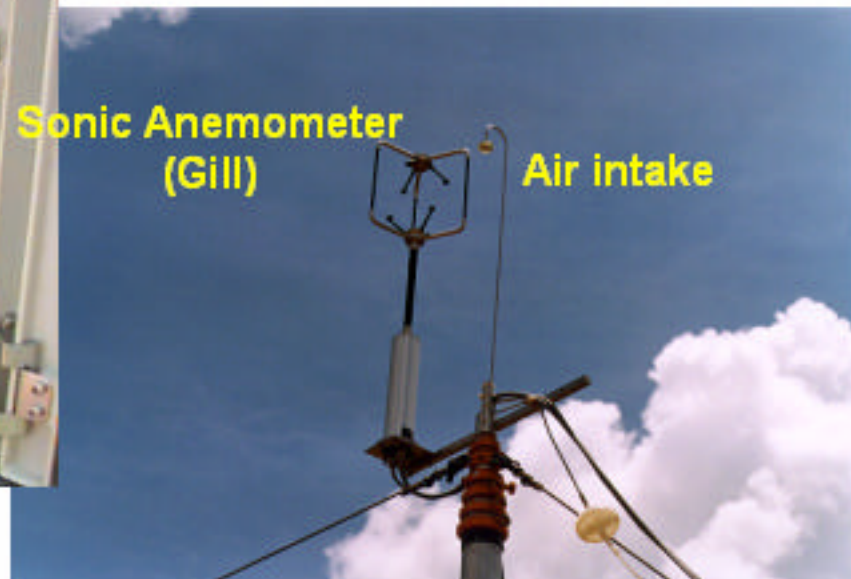


Rebio Jaru forest

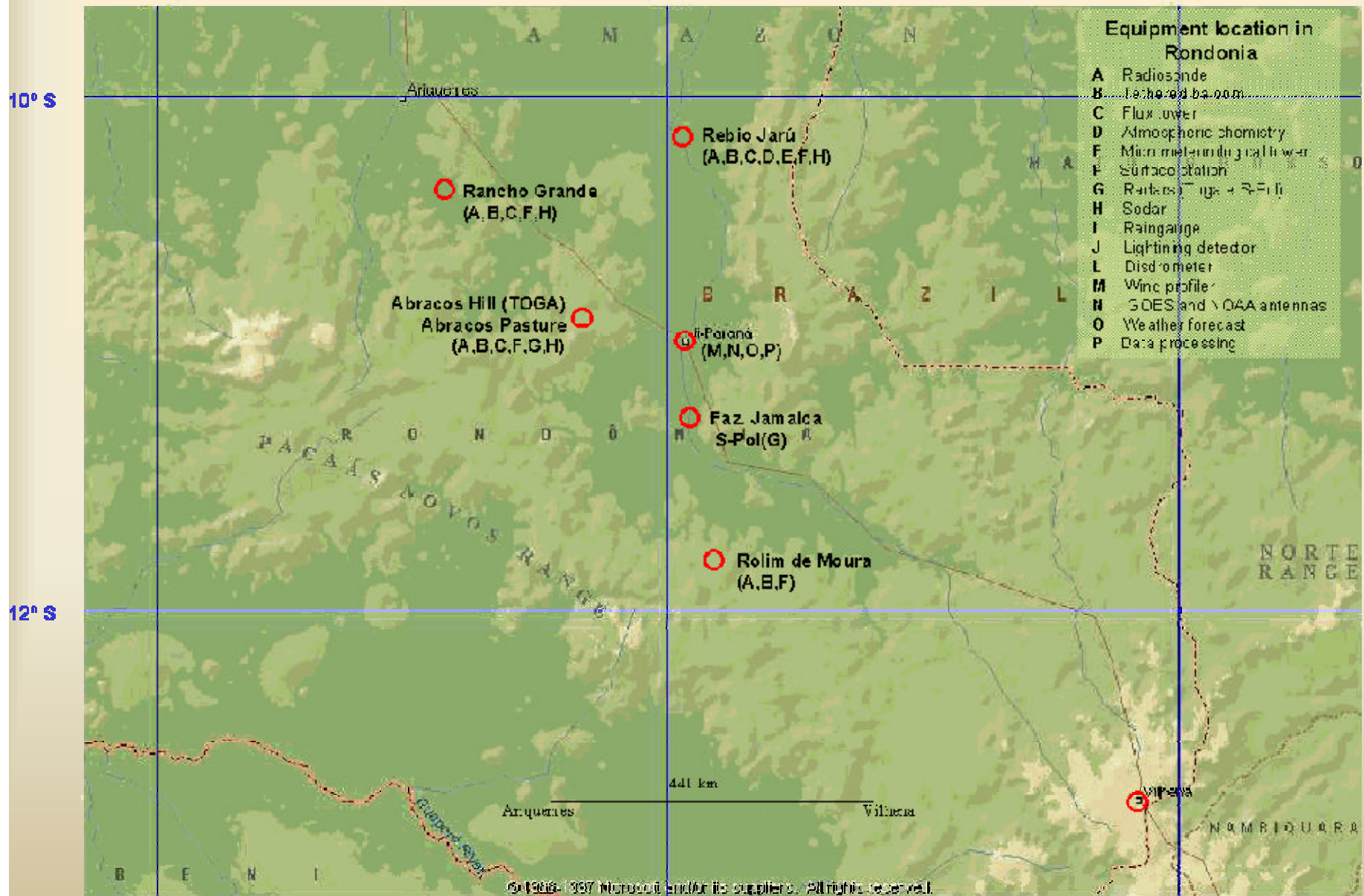


Sonic Anemometer
(Gill)

Air intake



Rondonia Sites



Rondonia Site (FNS-pasture)



Rondonia Data Status

- Data submitted but not in CEOP standards (same situation as Caxiuana site).
- LBA-DIS Personnel (Horta et al.) working with Caxiuana/Manaus sites to get data formatted / certified to CEOP standards.
- Fresh from the press: flux data received on Friday, Feb. 24, 2006.

Brasília

Campo Sujo Tower deactivated
Data available for Cerrado (1km apart)

CAMPO SUJO



CERRADO



Brasilia Data Status

- Data collection in progress.

Pantanal

Data available up to February
Tower will be deactivated Sep/2003



Fazenda São Bento– MS
(19° 33' S; 57° 54' W)



Pantanal Data Status

- Equipment maintenance and data collection put on HOLD (pending budget from LBA Central Office).

LBA Data submissions during the last 3 months:

- Manaus
 - Surface data posted in CEOP on Dec2005 for EOP3 phase I/II and EOP4 phase I and II.
 - Soil data posted in CEOP on Dec2005 for EOP3 phase I/II and EOP4 phase I and II.
- Brasilia
 - Soil data posted in CEOP on Jan 2006 for EOP3 phase II EOP4 phase I and II.
- Rondonia
 - Flux data submitted to LBA DIS group (Horta et. al) last Friday (Feb. 24) but not yet sent to CEOP.

Recommendation of the 18a LBA- SSC (November 14-15th 2005):

- 11th Recommendation: The SSC recommends that the following persons should serve as contacts for submitting LBA data to CEOP:
 - Brasília: Alexandre Santos
 - Caixuanã: Leonardo Sa
 - Manaus: Alexandre Santos
 - Rondônia: Maria Betania
 - Santarém: Humberto Rocha

Pantanal Issues

- **NO contact person for Pantanal site has been set by LBA SSC committee → should we remove the Pantanal site from CEOP?**

Thanks for your time !