



CEOS WGISS Contributions to CEOP

Osamu Ochiai, Ben Burford
JAXA

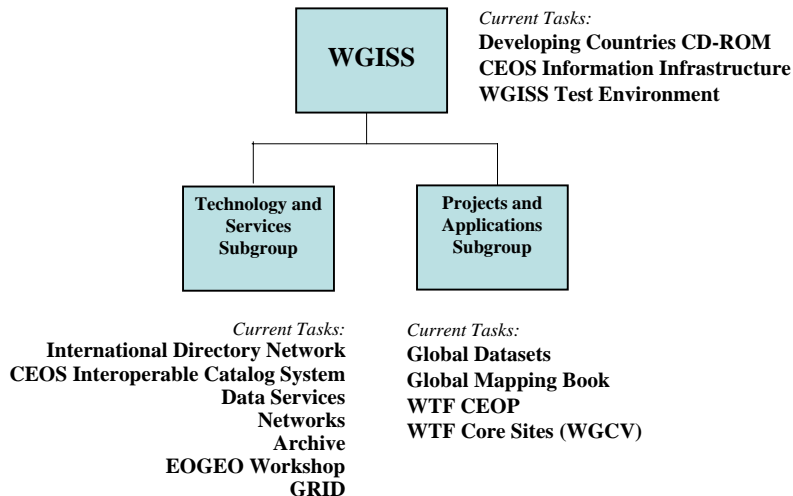
Ken McDonald, Yonsook Enloe
NASA/GSFC



CEOS WGISS

- International agencies that operate Earth observing satellites and affiliated science organizations are members of the Committee on Earth Observation Satellites (CEOS).
- CEOS members work together to coordinate the acquisition, exchange and utilization of Earth observation data.
- The CEOS Working Group on Information Systems and Services (WGISS) provides an effective forum CEOS partners cooperate in applying advanced, data system technology to meet CEOS goals and objectives.

WGISS - Working Group Structure



WTF CEOP Approach

- WGISS Test Facility encompasses joint activities of CEOP and WGISS.
- WTF CEOP Project Plan :
 - Identifies how WGISS and CEOP will work together
 - Identifies CEOP points of contact to answer questions and provide science input on WGISS agency developed small prototypes
 - Describes the data services needed by CEOP (e.g. data integration)
 - Identifies potential WGISS Agency tools and utilities that can support some of the data services needed
- WTF Implementation Plans:
 - With CEOP reps input, interested WGISS agencies identify existing tools that can be tailored to prototype a software capability associated with a data integration data service.
 - WGISS agencies develop specific Implementation Plans for the prototypes.
 - Phased approach where cycle can start again with additional Implementation Plans and prototypes
- Status of current WGISS agencies support for CEOP
 - JAXA (Lead WGISS Agency)
 - NASA
 - ESA (considering it)



CEOP Data Integration Document

- Method of capturing the results of the dialog that is occurring between CEOP and WGISS participants.
- Document describes what an integrated dataset is and the data services needed to support intercomparison of data in an integrated dataset.
 - This is expected to provide the WGISS agencies a better understanding of the data services that are needed by the CEOP community.
- After CEOP community review of document, this will be folded into the WTF Project Plan.
- <http://www.sgt-inc.com/~arao/data-integration.doc>
- Please send comments on the document to yonsook@harp.gsfc.nasa.gov by March 31st.



Setting Expectations

- Where is funding coming from to provide CEOP support?
 - CEOS and WGISS does not have funding.
 - Individual agencies leverage existing funding to provide support.
- WGISS cannot implement all the data services needed to support CEOP Data Integration.
- WGISS cannot develop a comprehensive Data System for Data Integration for the CEOP community.
- What will WGISS do ?
 - Encourage individual agencies to identify small prototypes to implement a limited set of data services.
 - Tailor existing tools to benefit a science community.
 - This will give WGISS agencies an understanding of that science community needs.
 - This will be a factor in future agency developments.
 - Share expertise in data management technologies.
 - Support communication between CEOP and satellite data centers.