

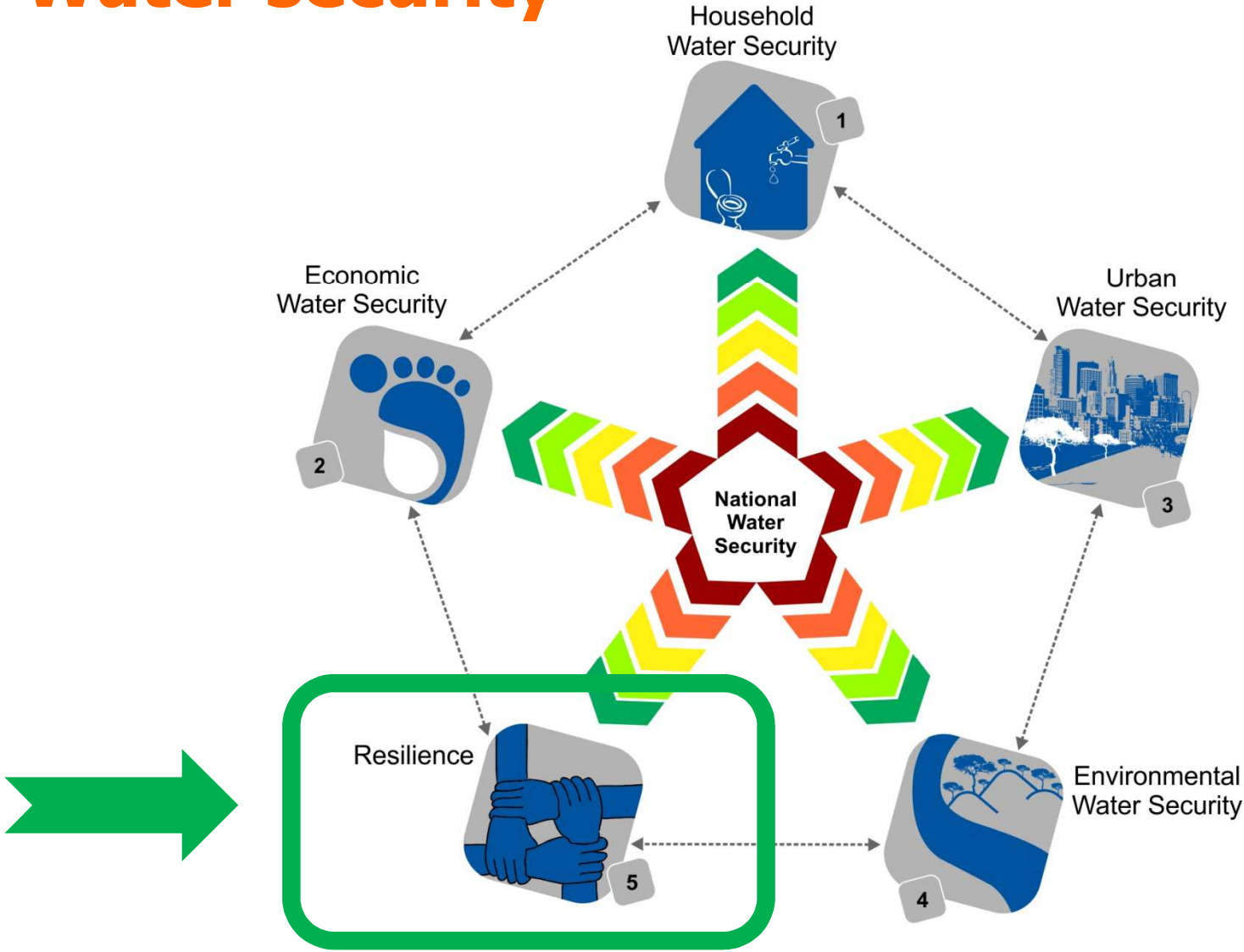


The most
powerful force
on earth is
the human soul
on fire.

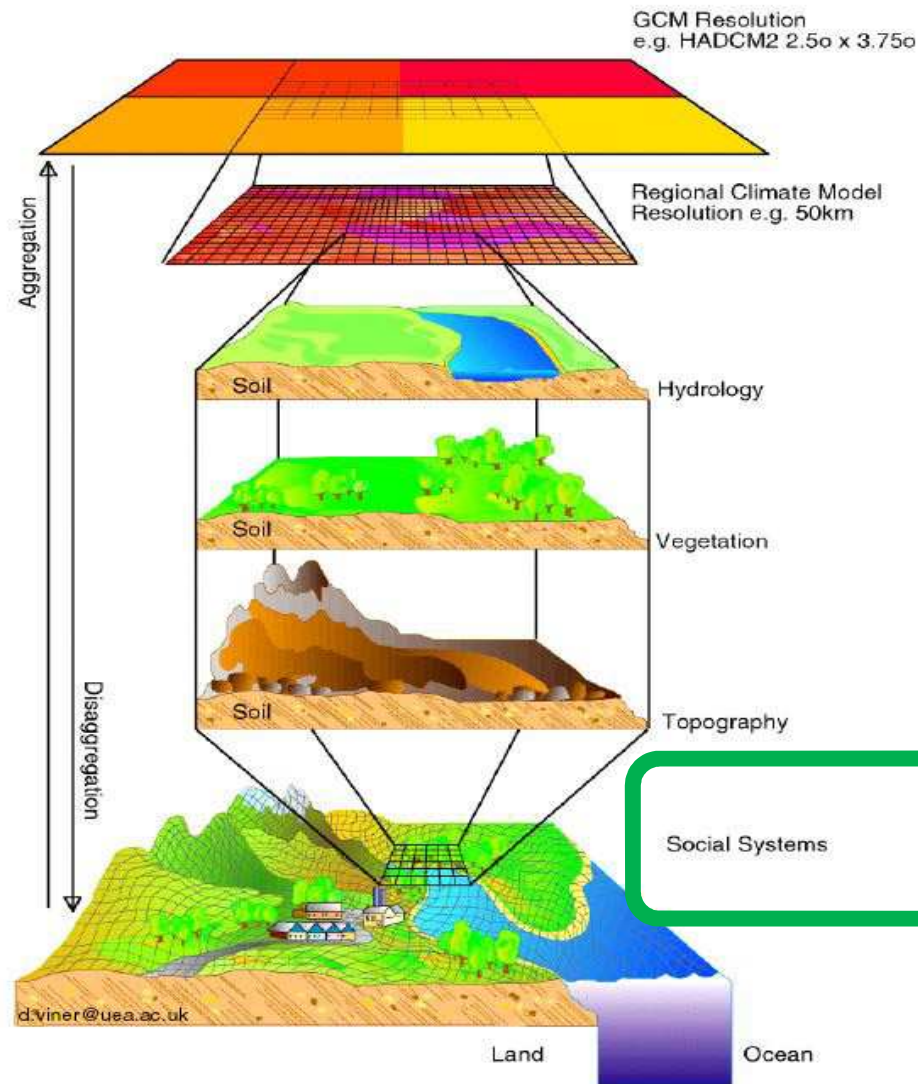


Use of the images is gratefully acknowledged.

Water security



Top-down and bottom-up approaches



“top-down”
projections:

- SRES scenarios
- GCM selection
- Downscaling

“bottom-up”:

- basin characteristics
- vulnerabilities
- drivers of change
- demand side
- governance
- IWRM framework

Why invest in resilience?

Societal resilience is a goal of water security

Development and adaptation are the means

Future climate conditions are *uncertain*

Increased resilience will reduce vulnerability over a wide range of potential conditions (including current climate variability and natural disasters)

Invest where it counts

Support communities to adapt to change
and be resilient to disasters

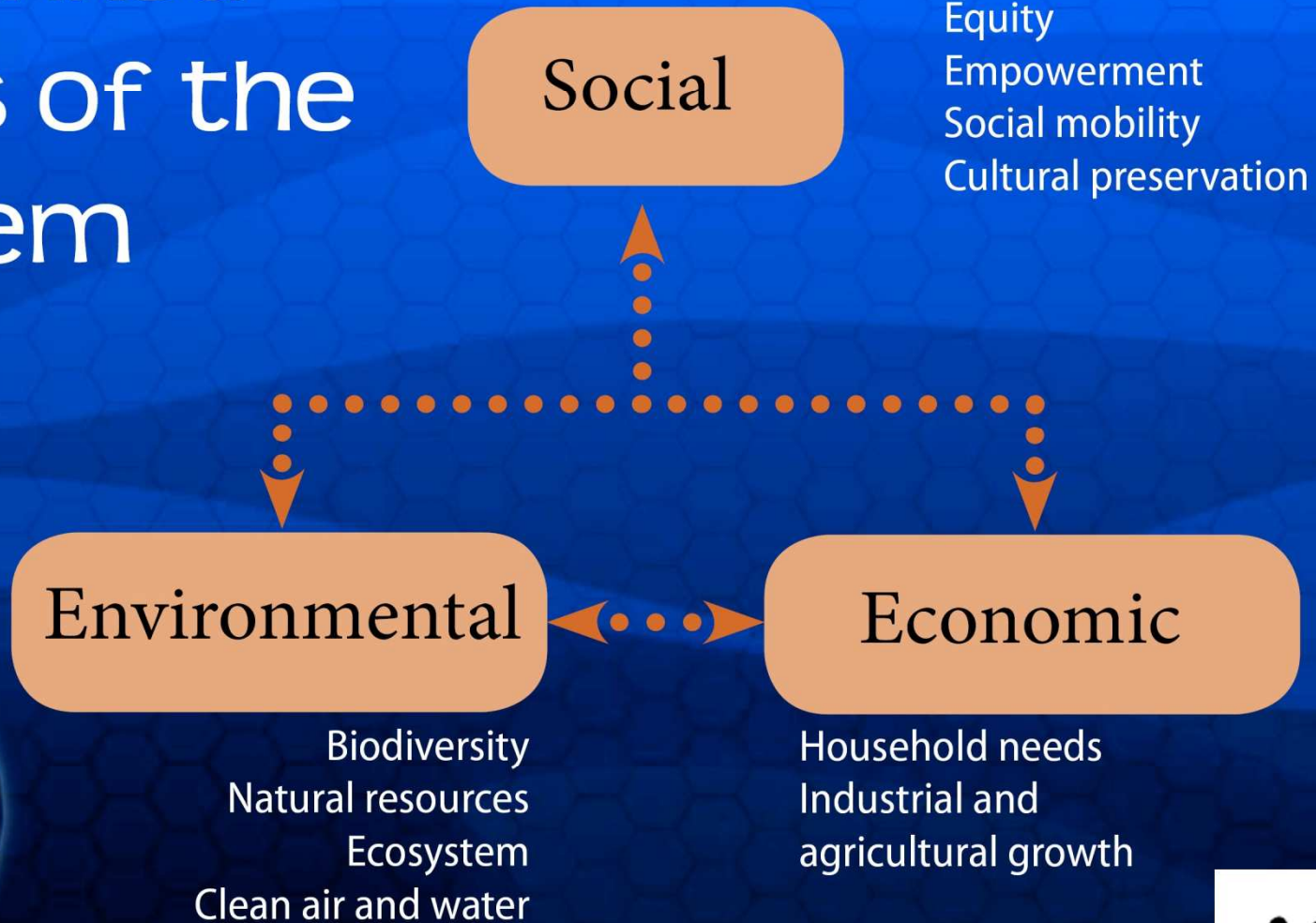
Satisfy basic development needs
shelter, water & sanitation, education, livelihoods, ...

Increase communities' response capacity
early warning systems, communication, ...

Nurture leadership
in a new generation of sustainability leaders

Keep in mind

Interlinked Roots of the Problem



Insight

Adaptation should not be seen as something “new and separate”; it must be considered an integral part of sustainable development.

~ Framework Document for Leaders

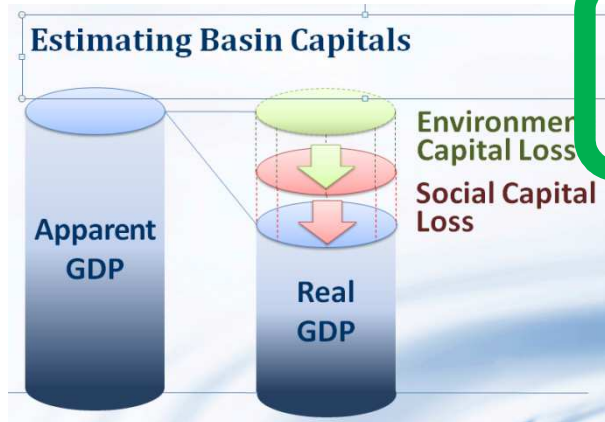
Measuring River Basin Capital

Triple Bottom Line

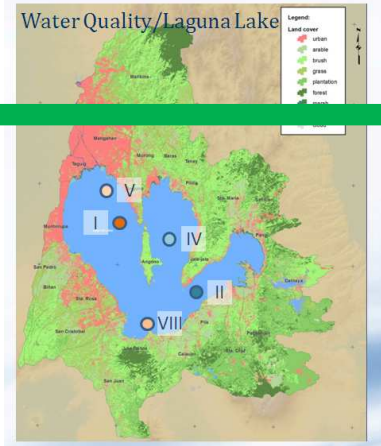
3 Es

Economic, Natural,
and Social Capital

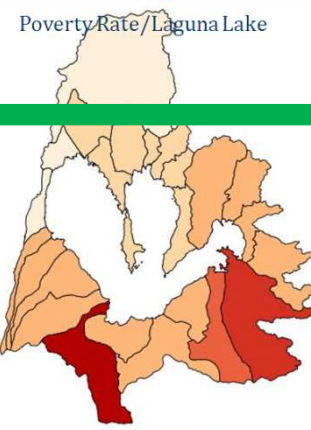
Piloted by
NARBO



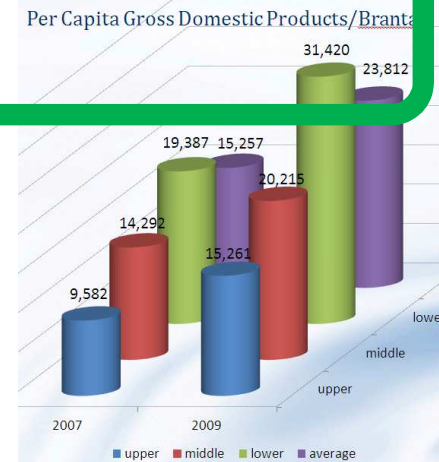
Environmental Capital



Social Capital



Economic Capital



Supported by capable RBOs



A call for
Leadership
for adaptation
for resilience
for IWRM

**invest in
sustainability
leadership
programs**



10-14 September 2012
Auditorium A-D
ADB Headquarters

Recommended priorities

- 1. Invest to build resilience**
- 2. Measure river basin capital**
- 3. Nurture sustainability leaders**

by Wouter Lincklaen Arriëns

From this morning's discussion

(to prepare the meta-guidelines)

Shift the paradigms underlying our methodologies to a holistic perspective.

~ Srikantha Herath
(paraphrased)

Peer pressure works!

~ German Velasquez