



Bridges to a New Waterscape

John Matthews • AGWA/Conservation International

management a consistent outcome?

What are the gaps in knowledge?

- Climate science? Economics? Engineering? **Decision-making processes**

Who needs to have resilient knowledge?

- Field vs donor staff? Executive personnel? **Technical staff**

How do we take a place-based approach or a thematic approach to changing decision making processes?

- Thematic agreement among key institutions should result



Development banks and capacity-building groups

the Asian Development Bank, European Investment Bank, KfW, the Inter-American Development Bank, GiZ, the Cooperative Programme on Water and Climate, and the World Bank.

Non-governmental Organizations

the Delta Alliance, International Water Association, the Swedish Environmental Institute (IVL), the Global Water Partnership, Deltares, Environmental Law Institute (ELI), Stockholm Environment Institute (SEI), Organization for European Cooperation and Development (OECD), Stockholm International Water Institute, Wetlands International, IUCN, The Nature Conservancy, ICIMC, WWF, Conservation International.

Governmental

ONAGUA, Seattle Public Utilities, US State department, NOAA, US Army Corps of Engineers, UN Water, UN Habitat, UNECE, Water Utilities Climate Alliance, WMO

Private Sector

UNEP FI, World Business Council for Sustainable Development

Key partners

Water & Climate Coalition, the Adaptation Partnership, the Global Environment Facility, UNFCCC

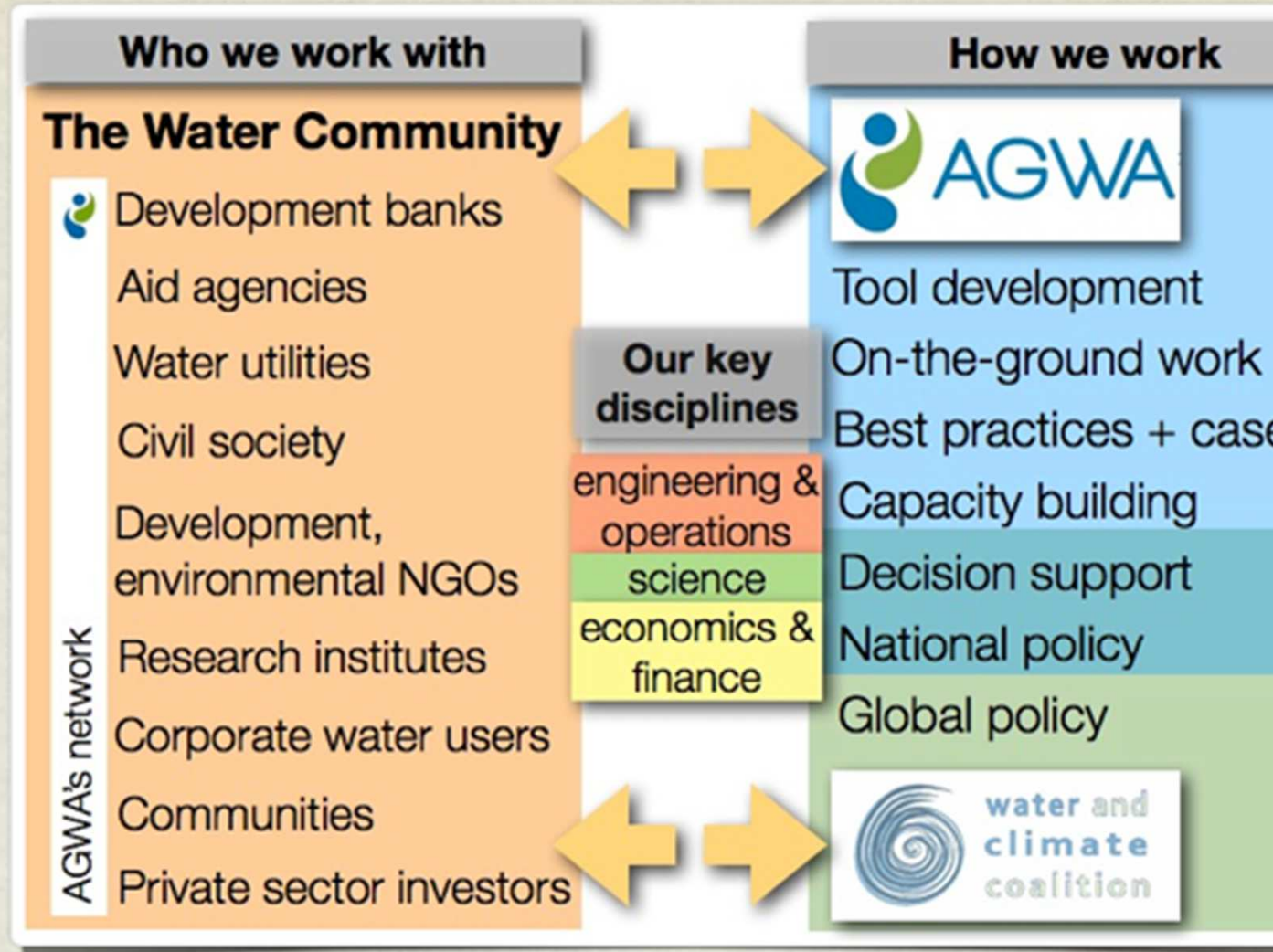
Decisions, globally

Founded in August 2010

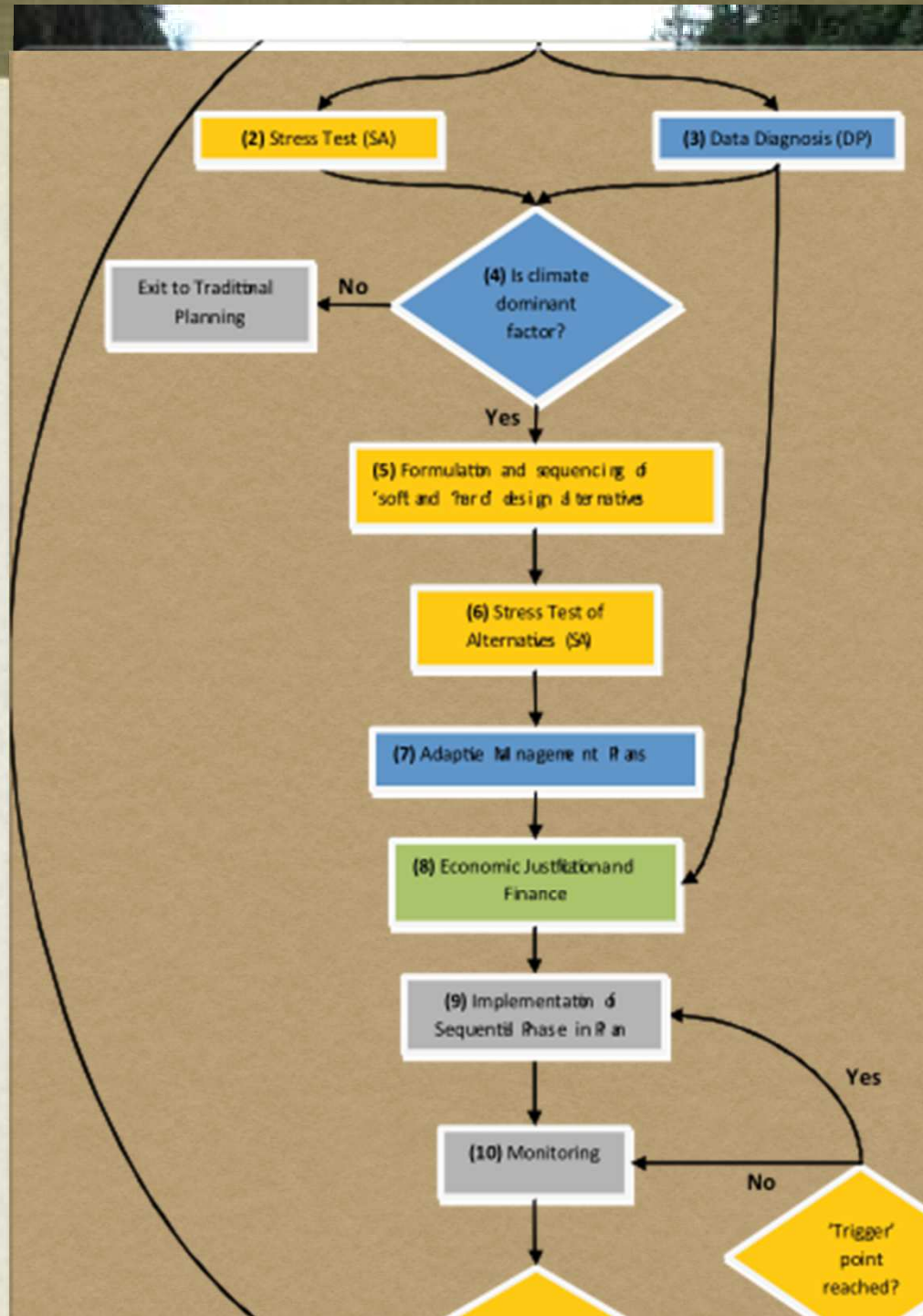
AGWA members are the operational experts from their respective institutions

We represent >\$20 billion USD in water investments annually

We are a **catalytic** network, seeking to define the next generation of **climate-adaptive best practices** in water management for engineering, economics/finance, hydrology, ecology, and governance



How do you integrate
adapting, uncertain climate
information into your design
and planning processes when
high confidence is required?



ordinated by the OECD, World Bank, and European Investment Bank

How do you create finance mechanisms that **mainstream** long-term sustainability practices into water management, **across the various areas?**

How do we evaluate tradeoffs between mitigation and adaptation?

How can the risks of uncertainty and delaying action be **quantified** into costs?



World Water Week, Stockholm, Sweden

How do you manage
infrastructure,
ecosystems, and
livelihoods for resilience over
long timescales?



Oregon, USA

Can you integrate “soft”
ecosystems into “hard”
infrastructure networks?



How do you manage across
institutional and political
boundaries with uncertain
guidelines?

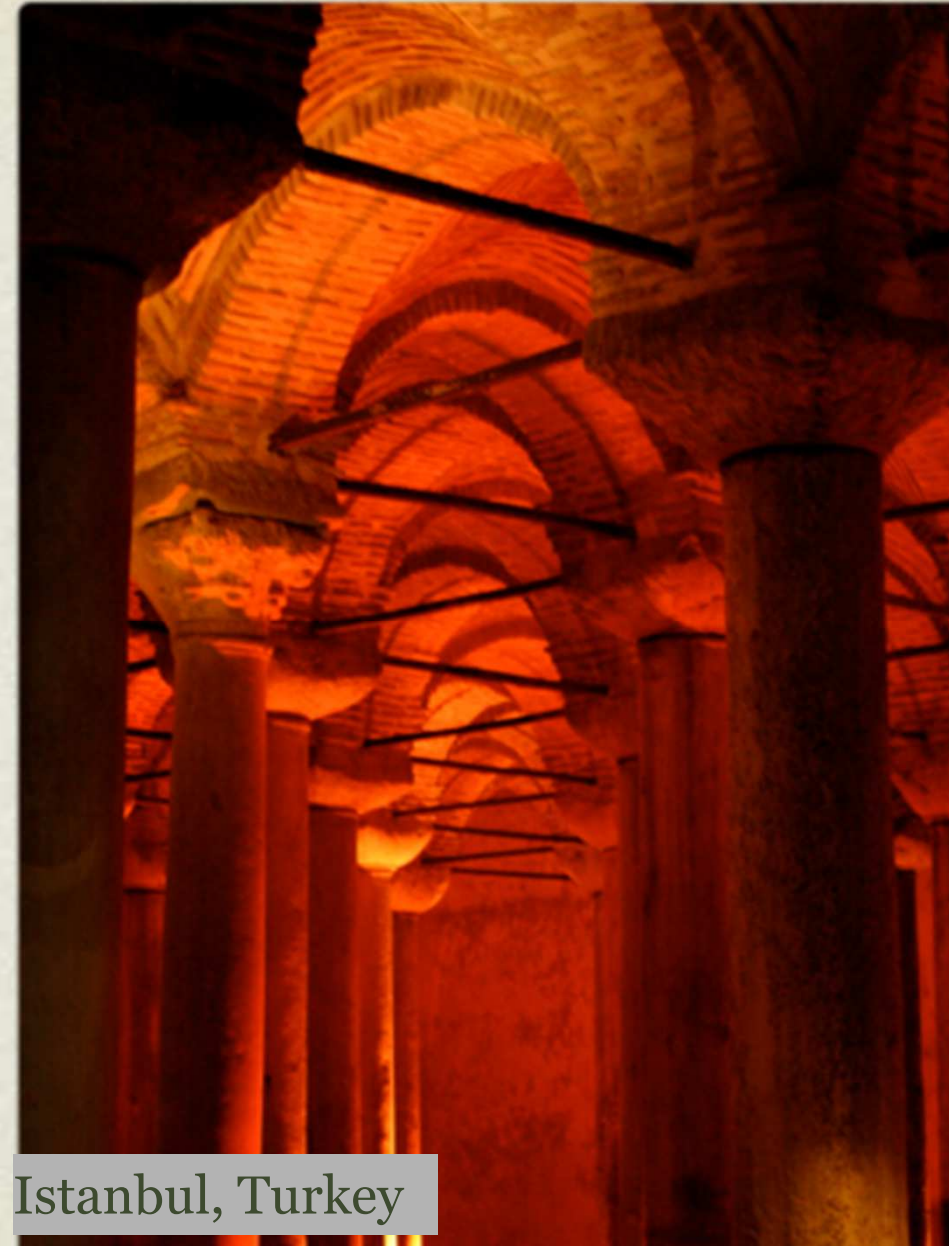
How do you help institutions
learn to be **flexible** in the
face of global change?



AGWA is seeking:

Commitments for
collaborators & partners for
content development

Commitments for reviewing,
piloting, support, and
implementation



Istanbul, Turkey



many thanks

John Matthews