

Bhutan

Climate Change

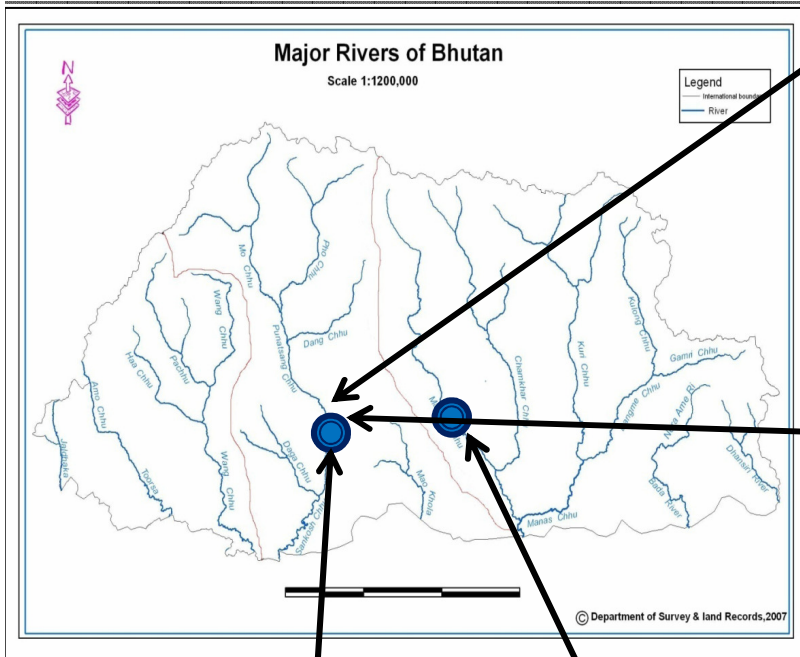
```
graph TD; A[Climate Change] --> B[Water]; B --> C[Energy]; B --> D[Disaster Risk];
```

Water

Energy

Disaster Risk

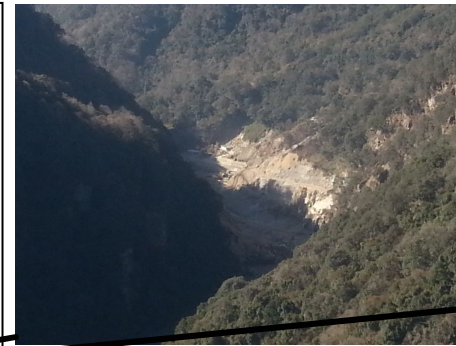
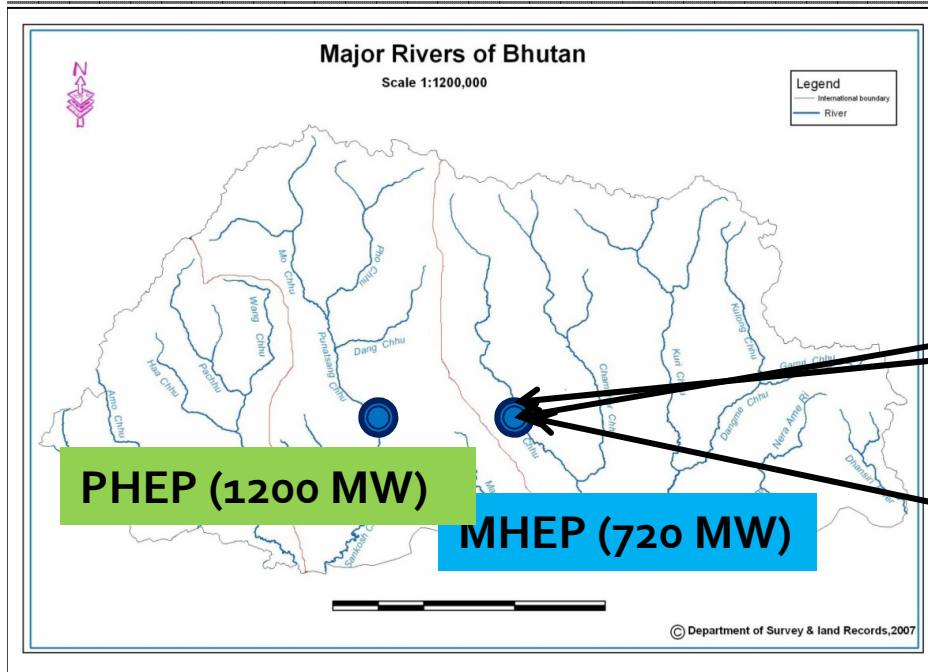
Punatsangchhu Project



PHEP (1200 MW)

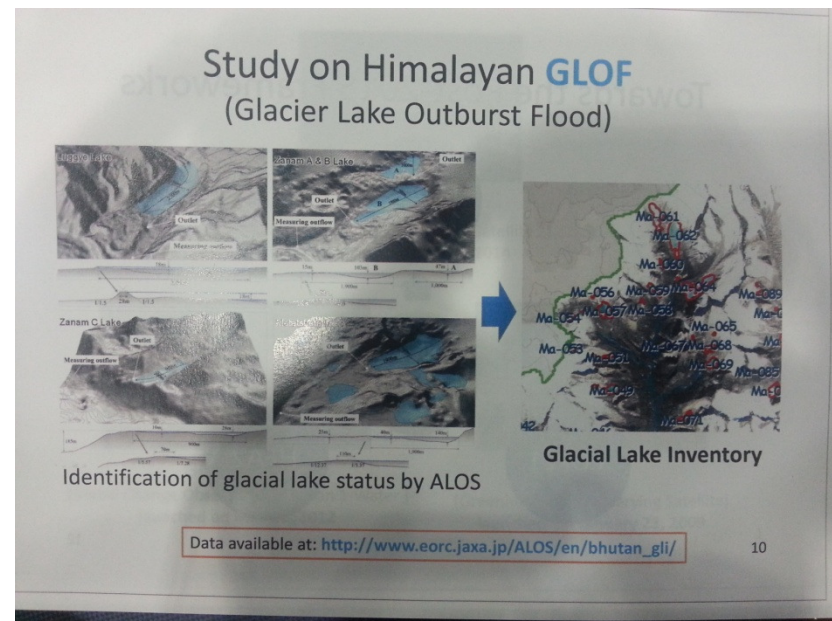
MHEP (720 MW)

Mangdechhu Project



Areas of Concern

- Glacial Lake Outburst Flood
- Flow Variation
- Sediment Management
- Flash Floods



What is requested?

Both projects completion year: 2017

Excavation of dam in progress in both projects in progress

A flood risk study using various models.

(Data on hydrology, river morphology, geology will be made available)