



# **WG1: GEOSS Asian Water Cycle Initiative(AWCI)**

**Toshio Koike**  
**The University of Tokyo**



# Sustainable Development

Climate Change

MDGs

Biodiversity

Coordinated and Integrated Efforts for Working Together

mitigation

adaptation

Regime Shift

Extremes

Flood/Drought

Climate System

Water Cycle

Water Resources Management System

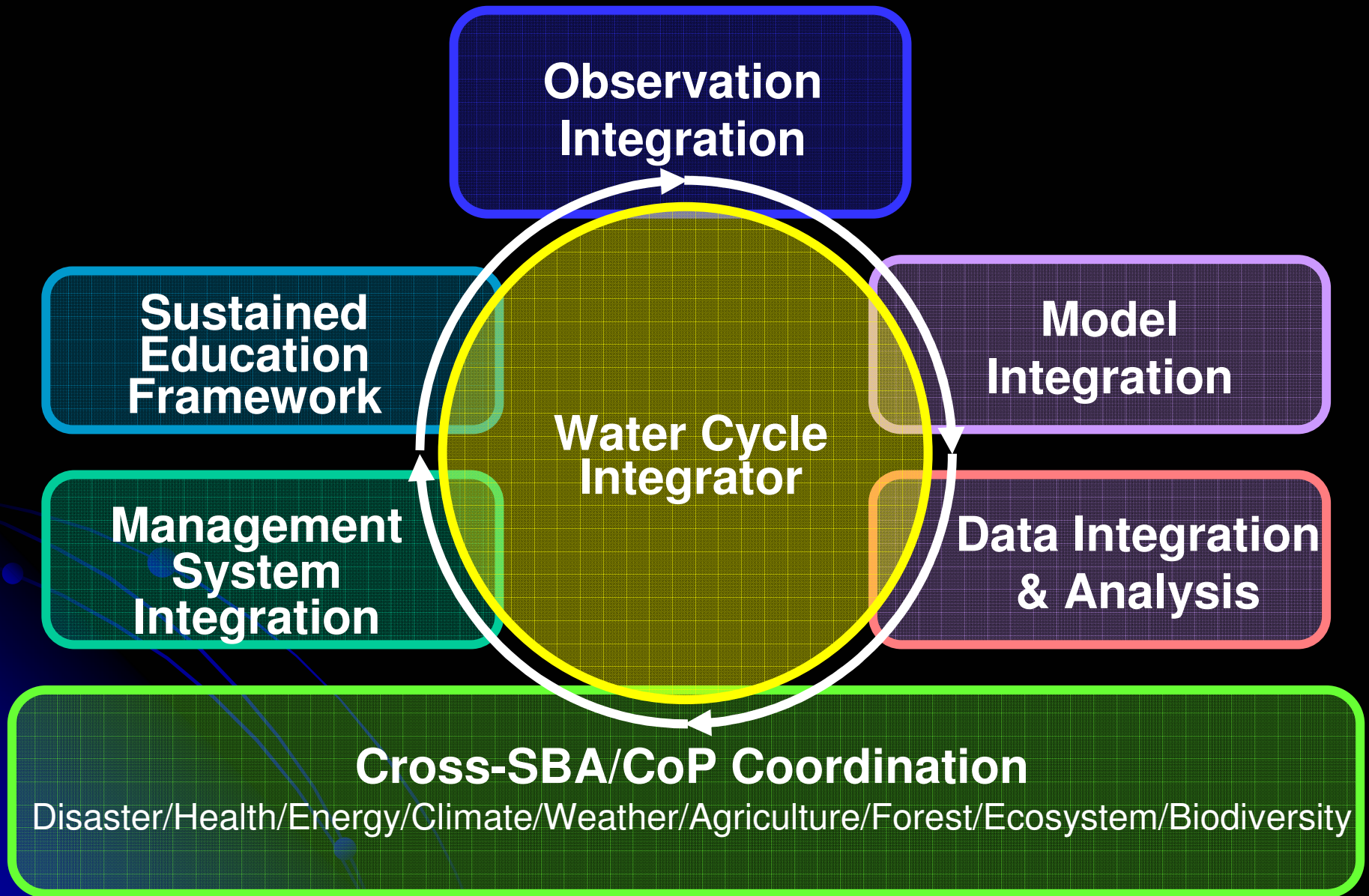
Biodiversity/Ecosystem

Agriculture/Food

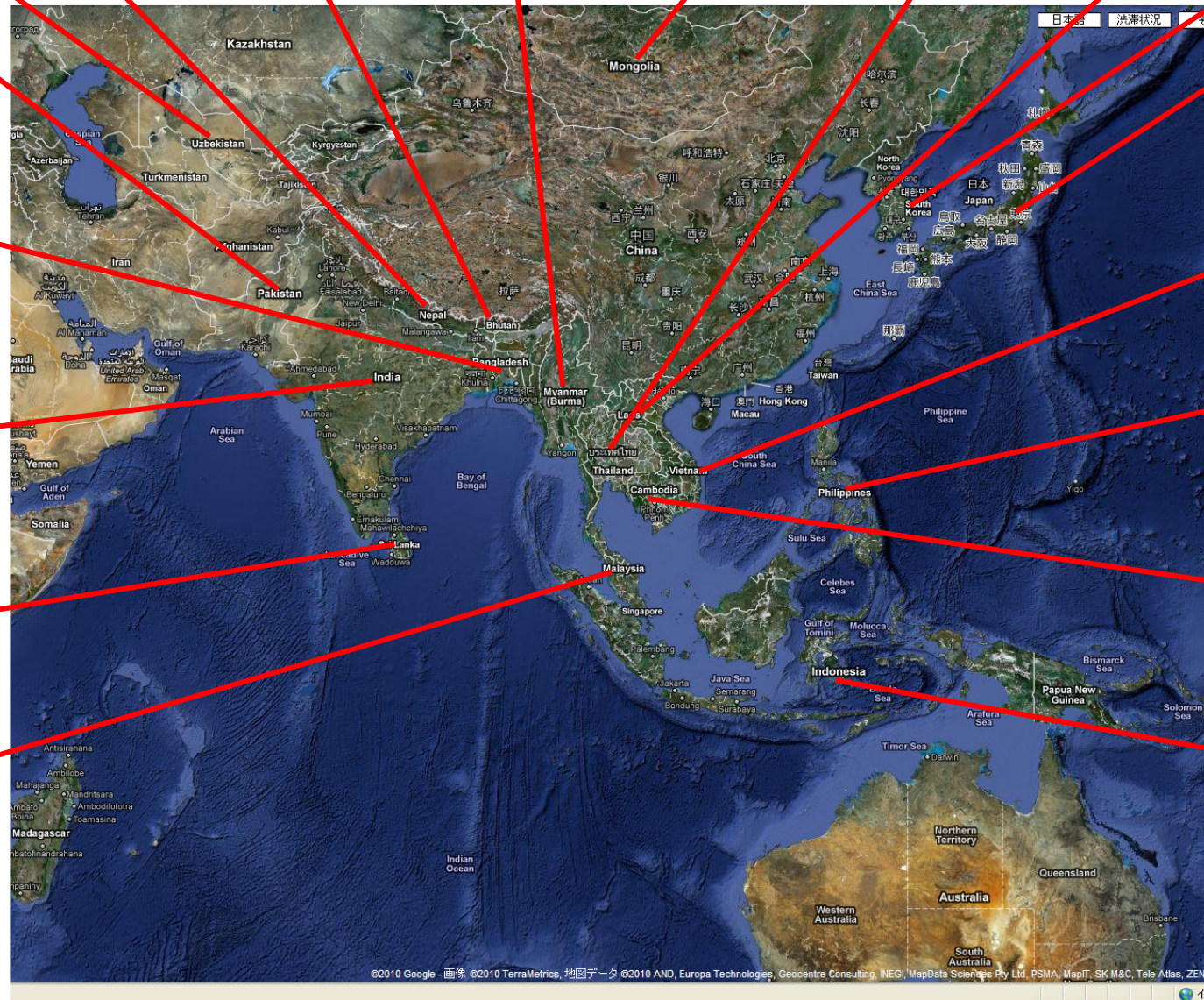
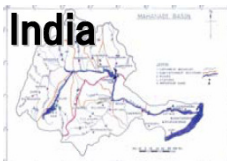
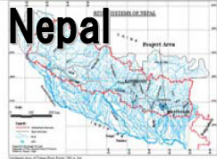
Health

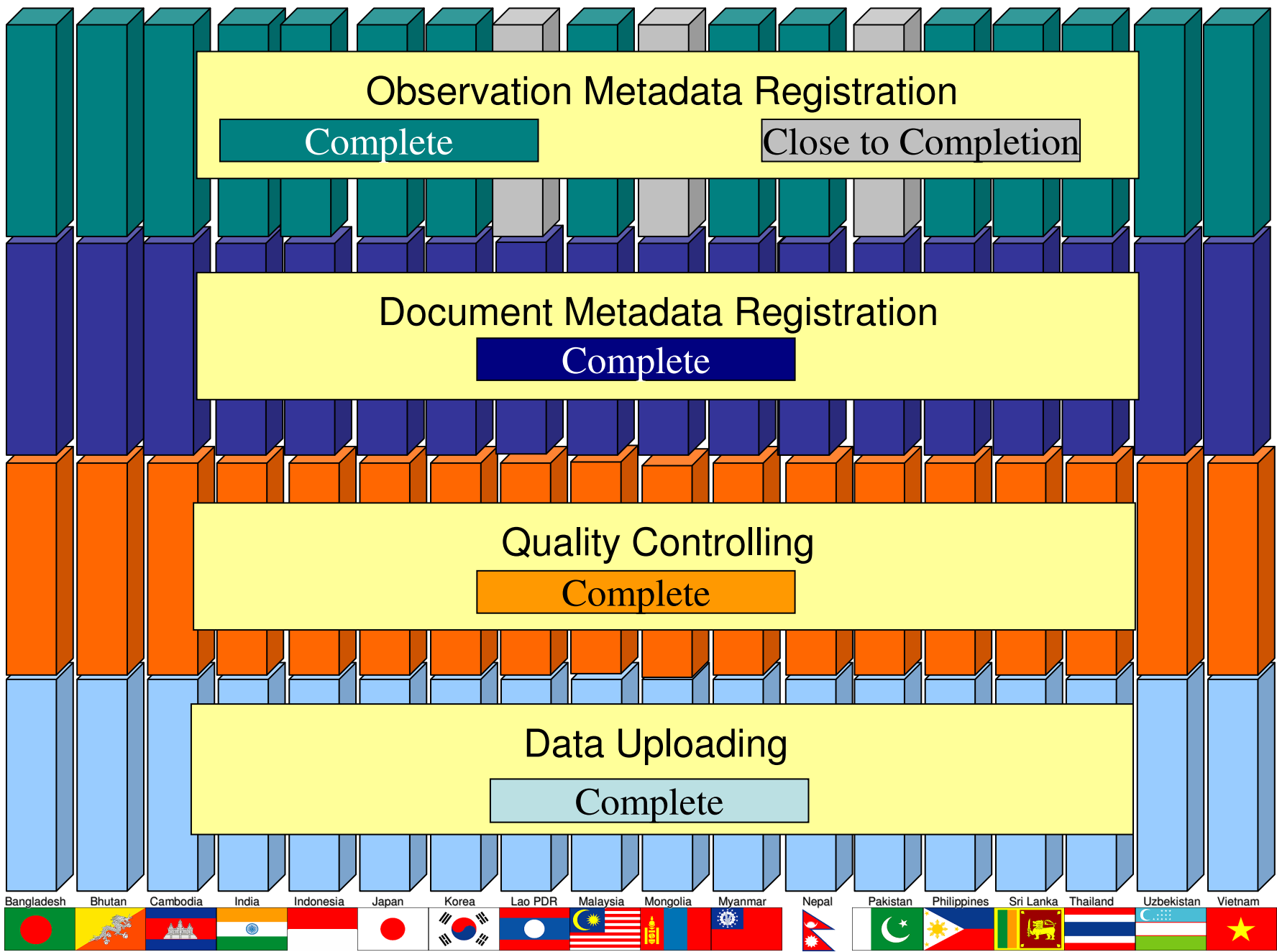
Energy

# Integrated & Coordinated Approach



# Demonstration River Basins





### Observation Metadata Registration

Complete

Close to Completion

### Document Metadata Registration

Complete

### Quality Controlling

Complete

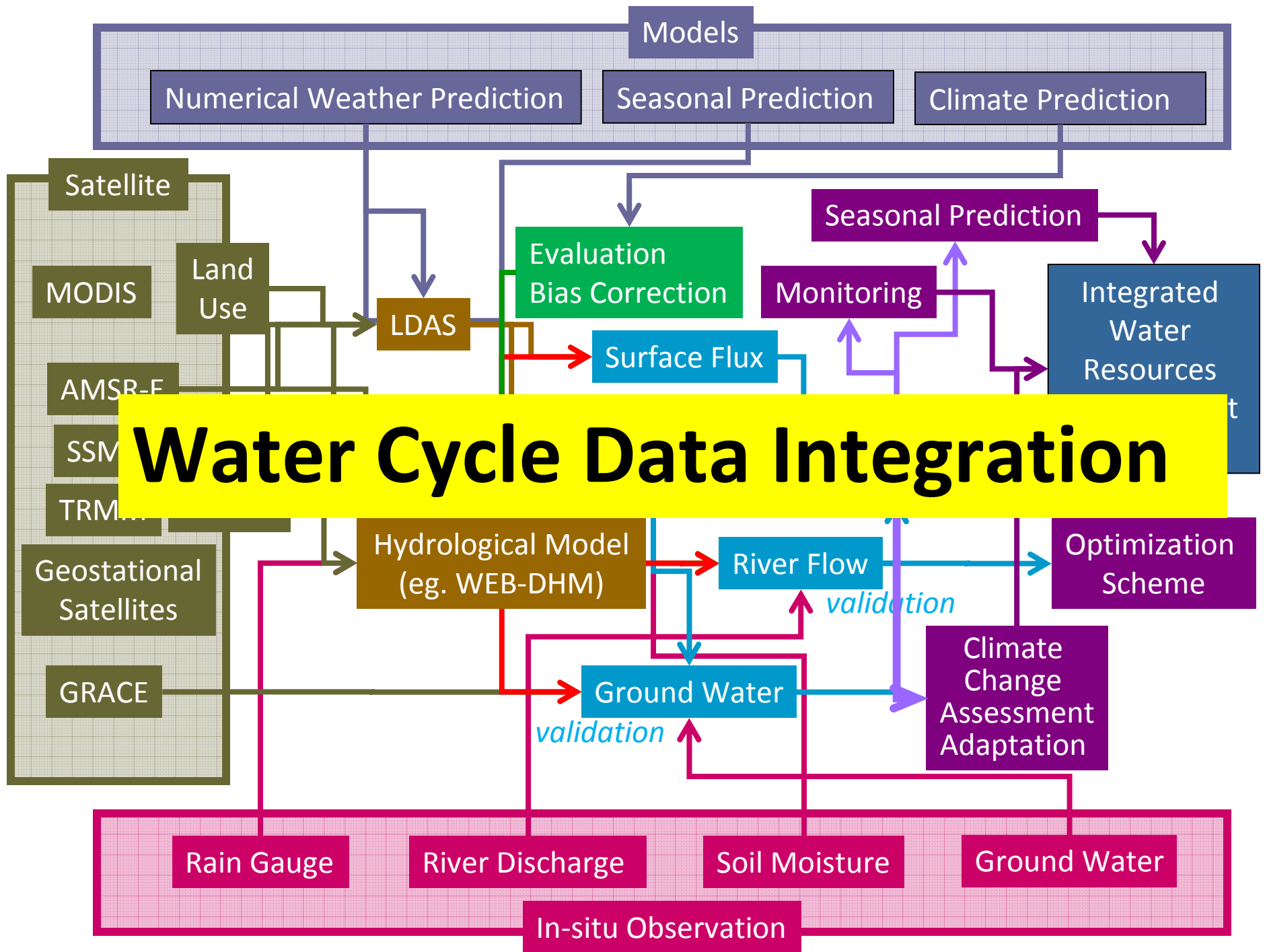
### Data Uploading

Complete

- Bangladesh
- Bhutan
- Cambodia
- India
- Indonesia
- Japan
- Korea
- Lao PDR
- Malaysia
- Mongolia
- Myanmar
- Nepal
- Pakistan
- Philippines
- Sri Lanka
- Thailand
- Uzbekistan
- Vietnam

# Satellite Observation Integration





# Water Cycle Data Integration

Numerical Weather Prediction

Seasonal Prediction

Climate Prediction

Satellite

MODIS

Land Use

AMSR-E

SSM

TRMM

Geostational Satellites

GRACE

LDAS

Evaluation Bias Correction

Surface Flux

Monitoring

Seasonal Prediction

Integrated Water Resources

Hydrological Model (eg. WEB-DHM)

River Flow

Optimization Scheme

Ground Water

Climate Change Assessment Adaptation

Rain Gauge

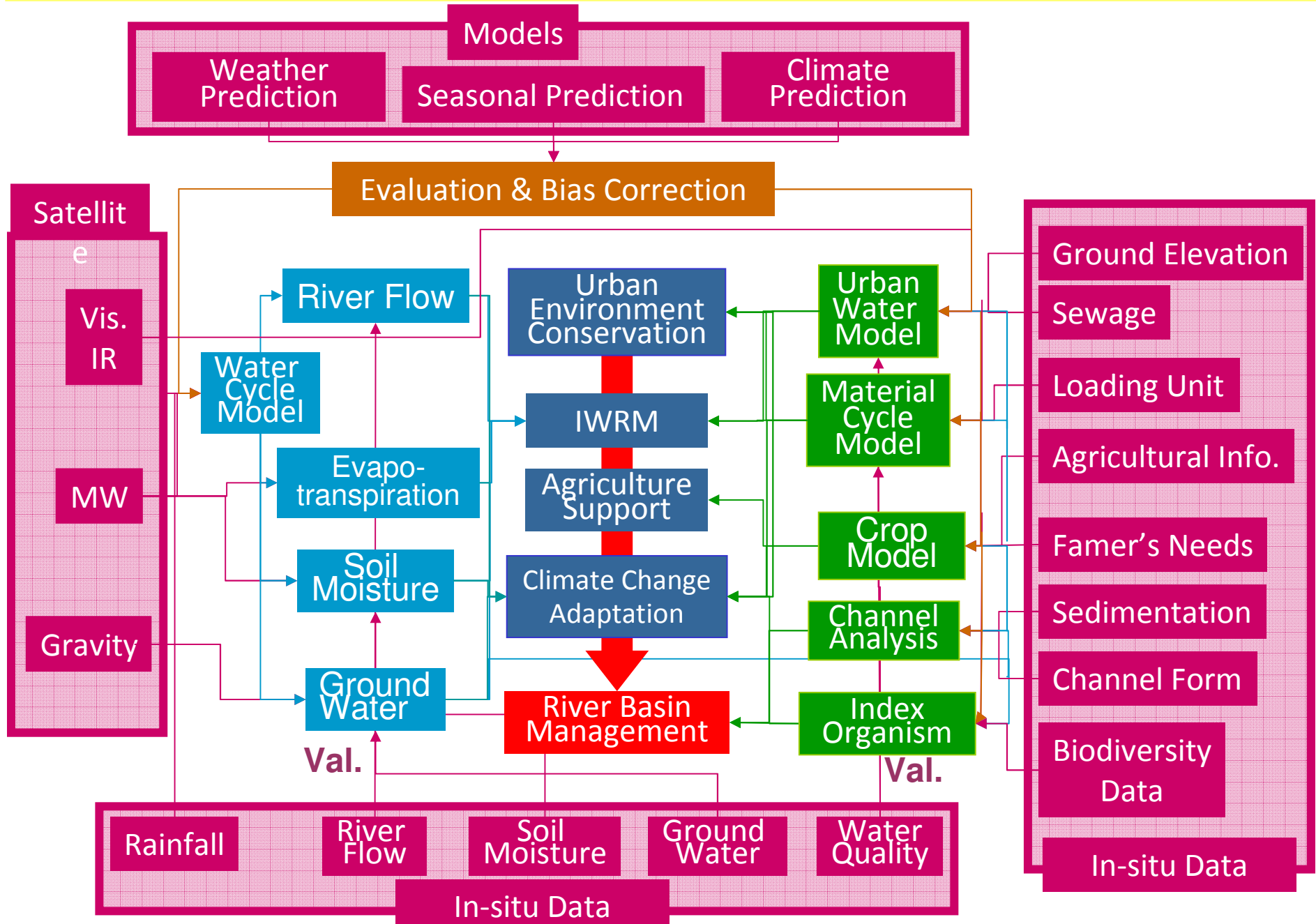
River Discharge

Soil Moisture

Ground Water

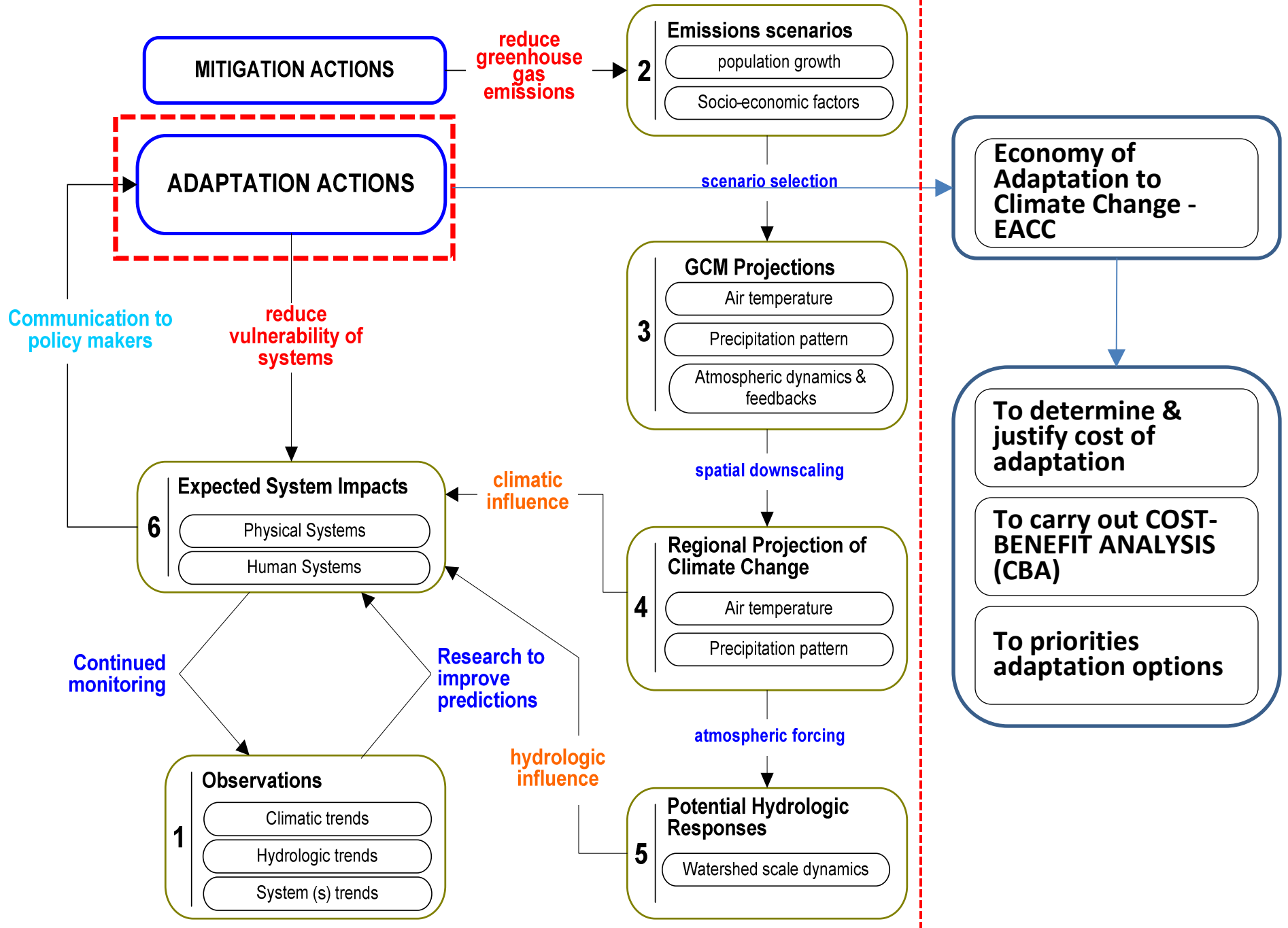
In-situ Observation

# Water Cycle Integrator (WA01-C1, 2012-2015 WP)





# HOW TO TRANSLATE RESEARCH FINDING?



# Training Modules Training Course

