



GLOBAL CRYOSPHERE WATCH (GCW): A WMO Initiative – an IPY Legacy

*observation, monitoring, assessment, product development,
research through to prediction*

Mission:

To meet the needs of WMO Members and partners in delivering services to users, the media, public, decision and policy makers, GCW will provide authoritative, understandable, and useable data, information, and analyses on the past, current and future state of the cryosphere.

- GCW will build upon and serve as an international mechanism for implementing the recommendations of the Integrated Global Observing Strategy (IGOS) - Cryosphere Theme (“CryOS”)
- GCW is a **crosscutting activity contributing to all five priority areas** and to achieving the expected results of all Strategic Thrusts of the WMO Strategic Plan 2012-2015
- GCW will be an essential component of WIGOS and will **strengthen the WMO contribution to the GFCS**
- GCW cuts across all the WMO technical departments, joint sponsored activities, and WMO Technical Commissions
- Currently, over 30 Members from all WMO Regions have nominated **GCW focal points** to be involved in the development of GCW globally and nationally

Partnering with technical commissions is essential



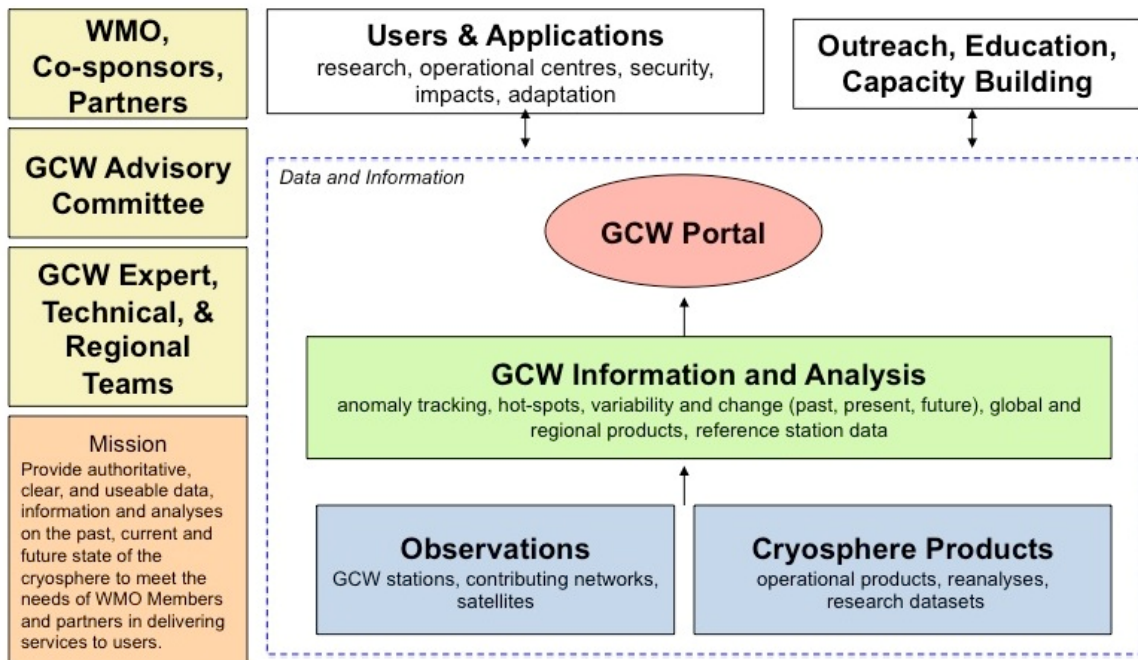
GCW Tasks and Timelines

Key Tasks and Activities	2007	2008	2009	2010	2011	2012	2013	2014	2015	2016	2017	2018	2019	2020	2021	2022	2023
	Definition Phase					Implementation Phase							Operational Phase				
Cg-XV requests report and recommendations for GCW development																	
Initial observational requirements defined (IGOS Cryosphere)																	
IPY-ITG GCW Expert Team prepare feasibility study																	
EC-LXI endorsed next steps for GCW with EC-PORS guidance																	
Governance, management, programmatic activities																	
Initial tasks identified by EC-PORS:																	
Engage WMO programmes, commissions, and partners																	
Identify/initiate pilot/demonstration projects to test GCW concept																	
Identify/establish cryosphere reference sites																	
Develop inventory of satellite products for GCW																	
Develop web portal and interoperability with cryo info providers																	
Establish GCW Project Office																	
Implementation:																	
Communications and Outreach																	
Regional implementation plans																	
Establish measurement requirements and standards/guidelines																	
Development of support tools																	
Annual State of the Cryosphere assessments																	
Development of GCW documentation																	
GCW Implementation Plan																	
Capacity Building																	

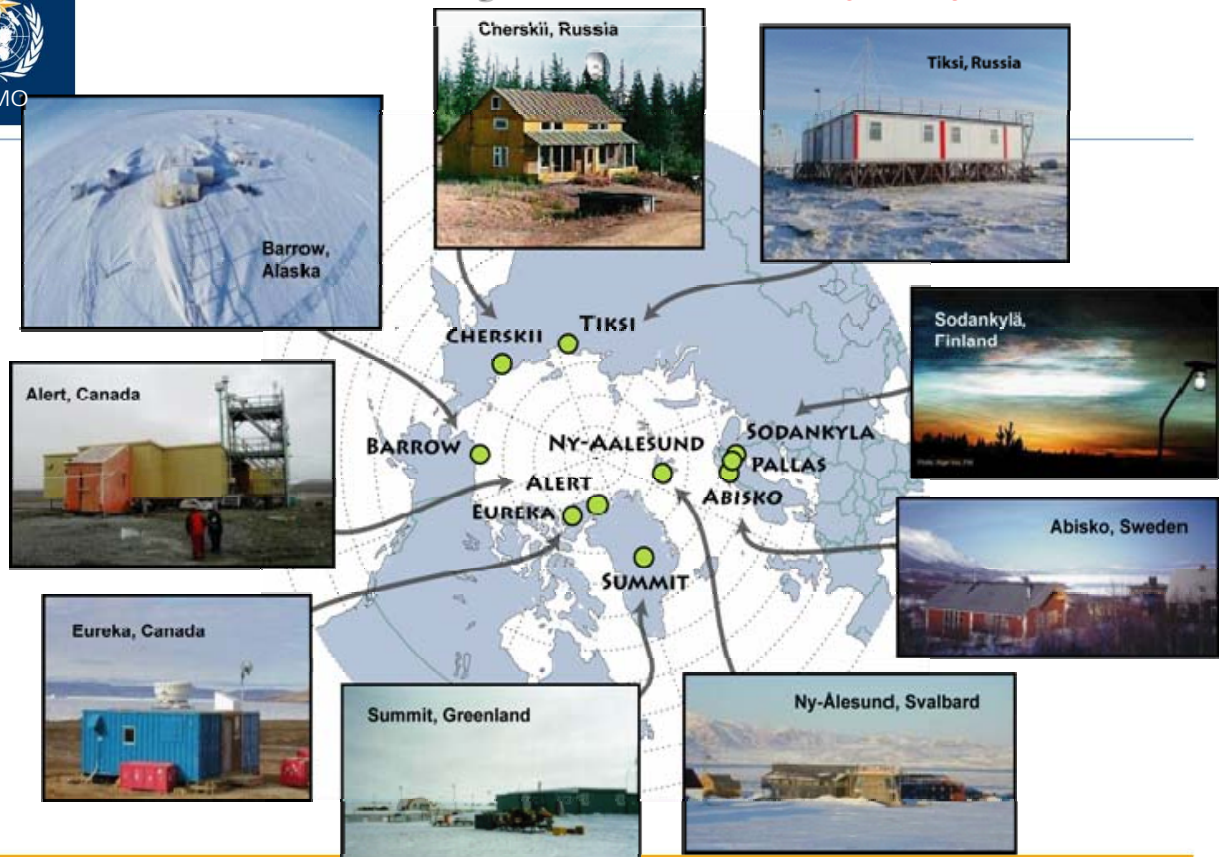
Work done to date
Work planned or underway
Work part of normal operations and not part of project if needed



Conceptual Framework for GCW Operation



Arctic Observing Network: *A Basis for CryoNET?*



A Basis for Integrated Environmental Monitoring (Supersites)?